



Phillimore Court, Kensington High Street, London



£1,000,000

Elegant 2-Bed Apartment in Iconic Kensington Mansion Block – With Lift, Porter & Communal Garden.

Set within a distinguished mansion block in the heart of Kensington High Street, this stylish and light-filled two-bedroom apartment offers refined living just moments from Holland Park, Kensington Gardens, and world-class shopping and dining.

Spanning 796 sq ft, the apartment features a generous reception room with separate kitchen, two well-proportioned bedrooms and a sleek modern family bathroom. High ceilings and classic period features blend seamlessly with contemporary finishes, creating a welcoming and comfortable city retreat.

The building is superbly maintained and benefits from lift access, a day porter, and access to a charming communal terrace garden, offering a tranquil escape from the buzz of the city.

Step outside your door to experience Kensington High Street's cosmopolitan charm — a hub of luxury boutiques, stylish cafés, Whole Foods Market, and acclaimed restaurants like The Ivy Kensington Brasserie and Dishoom.

Stroll to the serene greenery of Holland Park, Kensington Gardens, and Hyde Park, all just minutes away. Enjoy exhibitions at Design Museum, weekend walks through the Kyoto Garden, or a visit to Kensington Palace.

High Street Kensington Station (District & Circle lines) is a short walk, connecting you swiftly to South Kensington, Notting Hill, the West End, and the City.

Whether you're seeking a sophisticated London base, a charming pied-à-terre, or a smart investment, this residence ticks all the boxes.

Contact us now to arrange a private viewing and discover the best of Kensington living.

- Prime Kensington Location
- High ceilings & classic features
- 2nd floor, 796 sq ft
- Private residents' terrace
- Day Porter
- Lift access
- Close to shops, restaurants & tube
- Ground Rent: £100 pa
- Service Charge: £5,844.00 pa
- Share of Freehold

REQUEST A VIEWING
+44 (0)20 3019 6150

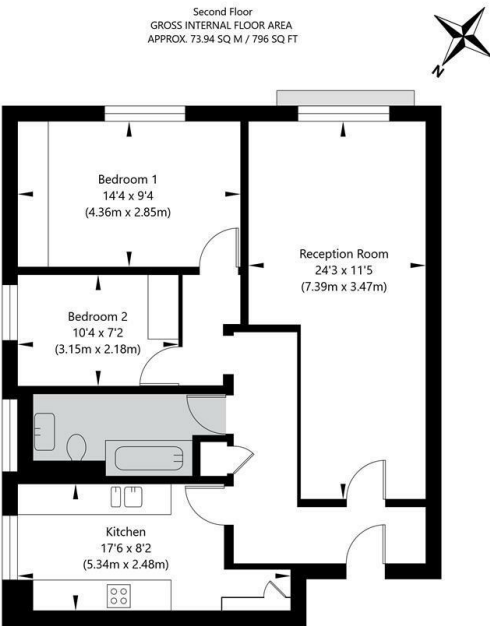


REQUEST A VIEWING
+44 (0)20 3019 6150



REQUEST A VIEWING
+44 (0)20 3019 6150

Phillimore Court, Kensington High Street W8 7DS



APPROXIMATE GROSS INTERNAL FLOOR AREA 73.94 SQ M / 796 SQ FT
THIS FLOOR PLAN IS FOR ILLUSTRATIVE PURPOSES ONLY AND
SHOULD BE USED FOR THIS PURPOSE BY PROSPECTIVE APPLICANTS AS ITS NOT TO SCALE.

